

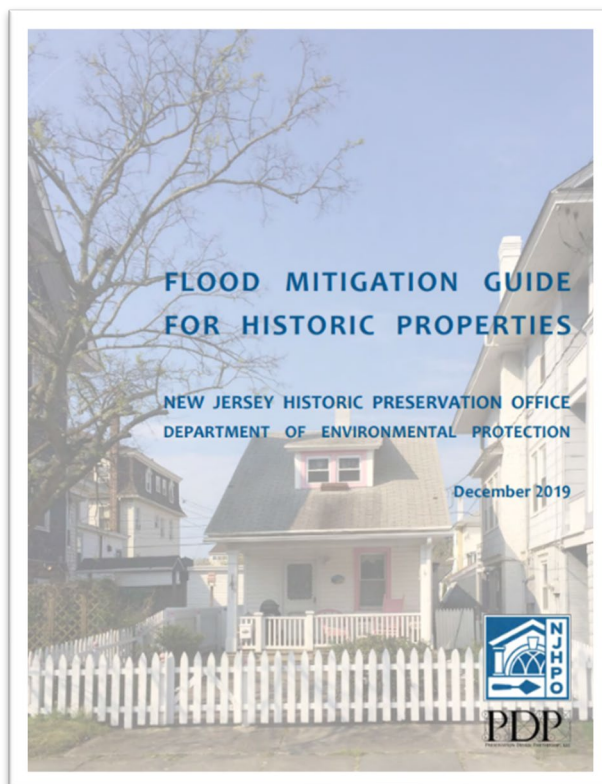
Image Source: NJHPO Elevation Design Guidelines for Historic Properties (Photograph courtesy of NJ HPO/FEMA)



Climate Change Resources for the 2024 Preserve NJ Application

How are you factoring climate change into your preservation efforts?

- *Are you currently in the planning phase of your project? See these resources for more information about how to plan for climate change.*
 - FEMA, Integrating Historic Property and Cultural Resource Considerations into Hazard Mitigation Planning: State and Local Mitigation Planning How-To Guide, 2005. [Learn more.](#)
 - Rutgers, NJ Climate Change Resource Center, Climate Change Preparedness in NJ: Best Practices for Local Planners. [Visit resource.](#)
 - Foundation for Advancement in Conservation (FAIC), Build Resilience Strategy, 2024. [Start Planning.](#)
 - NJ Office of Planning Advocacy, New Jersey Municipal Climate Resilience Planning Guide, 2022. [Click here.](#)
 - North Carolina Department of Cultural Resources Connecting to Collections Workshop, The Importance of Planning for Disaster and Recovery, 2012. [Resource link.](#)
 - NJ Historic Preservation Office, Flood Mitigation Guide for Historic Properties, 2019. [Visit guide.](#)



"Indeed, climate change threatens not only the tangible environment around us but also the intangible ways of life we value. Accounting for sustainability and climate resiliency is at the forefront of our planning needs."

– New Jersey Comprehensive Statewide Historic Preservation Plan: 2023-2028

○ ***Are you in the design phase of your project? Below are several resources that include climate-change design strategies.***

- FEMA, Flood Damage-Resistant Materials Requirements for Buildings Located in Special Flood Hazard Areas in Accordance with the National Flood Insurance Program, 2008. [For more information.](#)



Image: Andrews Bartlett House

- NJ Historic Preservation Office, Elevation Design Guidelines for Historic Properties, 2019. [Visit guidelines.](#)



Image: All Saints Episcopal Church

- FEMA, Wet Floodproofing Requirements and Limitations for Buildings and Structures Located in Special Flood Hazard Areas in

Accordance with the National Flood Insurance Program, 2022. [Learn more.](#)

- National Park Service, SOI Standards for Rehabilitation and Guidelines on Flood Adaptation for Rehabilitating Historic Buildings, 2021. [Guidelines link.](#)
- National Park Service, Weatherization of Historic Buildings: Install Insulation. [Visit website.](#)
- National Park Service, Weatherization of Historic Buildings: Repair and Upgrade Windows and Doors. [Read more.](#)
- WBDG Historic Preservation Subcommittee, Sustainable Historic Preservation. [Read here.](#)

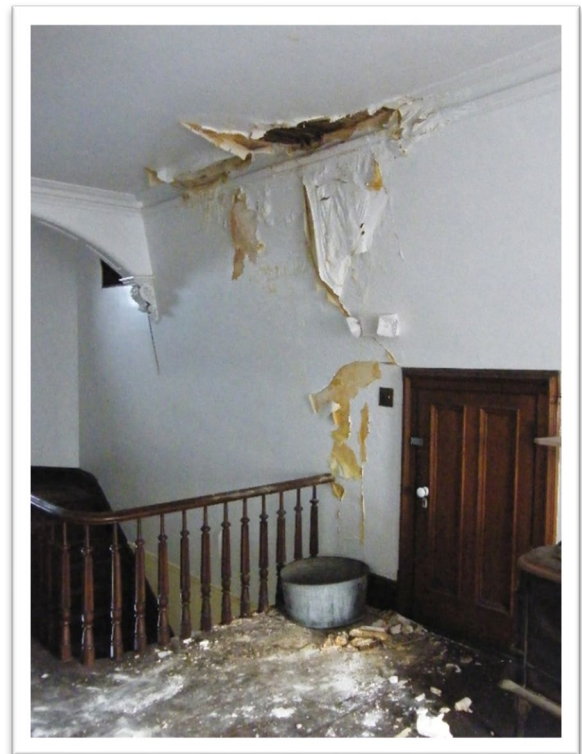


Image: Red Dragon Canoe Club



"If future generations of Americans are to experience the joy and wonder that these extraordinary places engender, we must act now to protect them from the impacts of climate change today and prepare them for expected additional changes tomorrow."

- Union of Concerned Scientists, "Landmarks at Risk," 2014

Historic properties in NJ are subject to a variety of climate hazards. To learn more about the *hazards* your historic resource *may be susceptible to*, see the sources below.

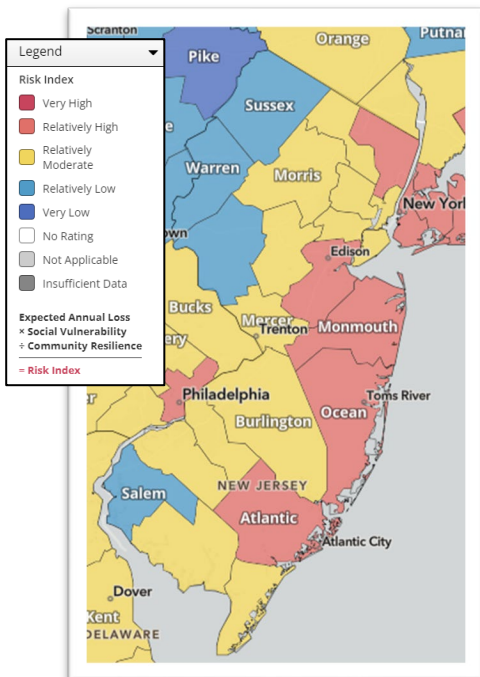


Image Source: FEMA National Risk Index

Potential climate hazards

- Avalanche
- Coastal flooding
- Cold wave
- Drought
- Earthquake
- Hail
- Heat wave
- Hurricane
- Ice storm
- Landslide
- Lightning
- Riverine flooding
- Strong wind
- Tornado
- Tsunami
- Volcanic activity
- Wildfire
- Winter weather

- FAIC, Assess Climate Risk. [Click here.](#)
[User Guide Home.](#)
- FEMA Flood Smart Guide. [Visit guide.](#)
- FEMA, National Risk Index. [Check resource.](#)
- NJ Office of Emergency Management, New Jersey State Hazard Mitigation Plan, 2019. *Section 5.1: Identification of Hazards. [Learn more.](#)
- NJ Adapt: NJ HazAdapt. [For more information.](#)

"One of the biggest challenges to integrating historic preservation considerations into climate change and disaster planning is the lack of data in most communities have regarding which resources are vulnerable and the nature and extent of that vulnerability."
 – New Jersey Comprehensive Statewide Historic Preservation Plan: 2023-2028

Is the resource located in a flood zone?

- FEMA Flood Map Service Center. [Click here.](#)
- NJ Adapt: NJ Flood Mapper. [Visit resource.](#)
- NJ Department of Environmental Protection, Flood Risk Notification. [Go to resource.](#)
- NOAA Sea Level Rise Viewer. [Check the resource.](#)
- Rutgers, New Jersey Climate Change Resource Center: Historic Preservation and Climate Change, 2022. [Learn more.](#)

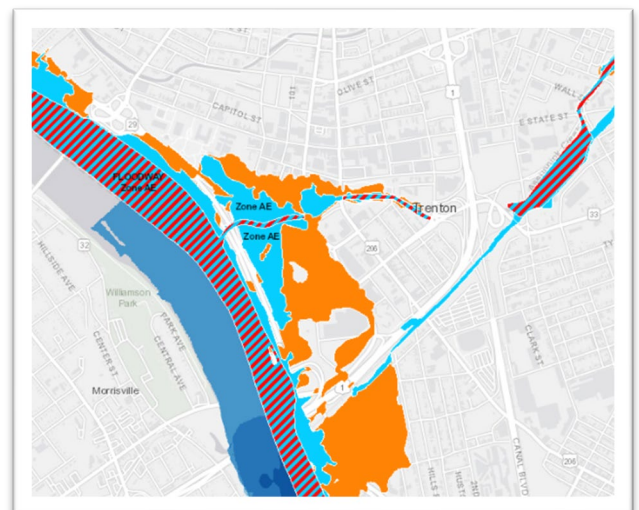


Image Source: NJ Flood Mapper

Considering flood insurance and/or looking for more information?

- FEMA, National Flood Insurance Program, Floodplain Management Bulletin: Historic Structures. [Learn more.](#)
- FEMA, National Flood Insurance Program, Community Status Book Report: New Jersey. [Read report.](#)
- National Trust Insurance Services, LLC. [Visit resource.](#)
- NJ Department of Environmental Protection – Watershed & Land Management, National Flood Insurance Program. [Visit page.](#)
- Jake Bradt, et al., The National Flood Insurance Program and New Jersey, 2020. [Click here.](#)

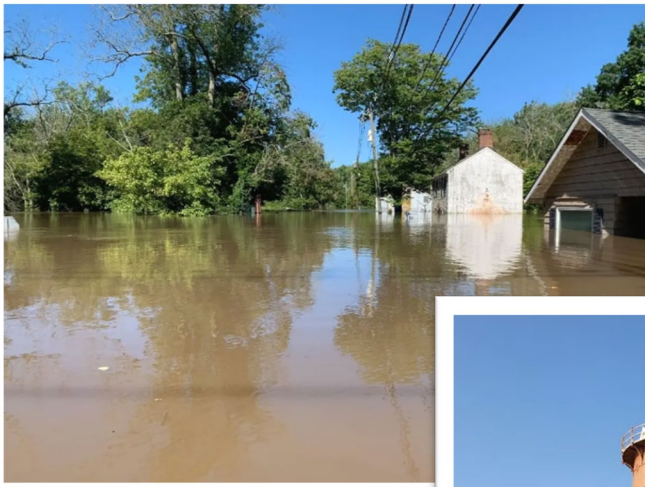
"NFIP participating communities include 552 of the 566 New Jersey municipalities..."
– NJ DEP



National Flood Insurance Program (NFIP)
Floodplain Management Bulletin
Historic Structures

FEMA P-467-2

May 2008



Above Image: Delaware & Raritan Canal State Park. Source: Patch.com



Above Image: Evergreen Cemetery

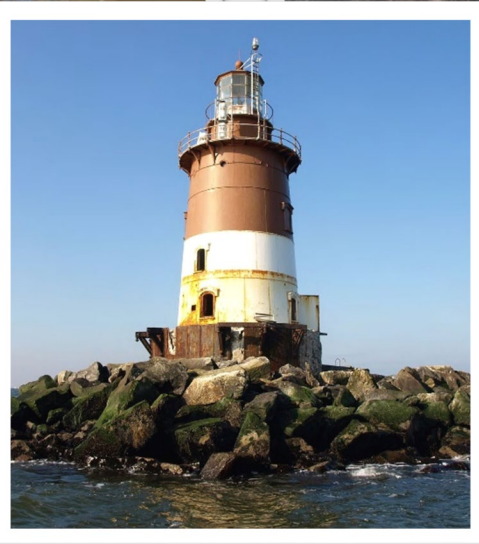


Image: Romer Shoal Lighthouse

